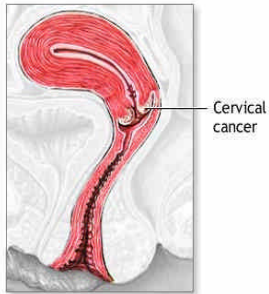




Magnolia Medical Clinic

Improving Cervical Cancer Screening Rate



ADAM

Cervical cancer is the third most common type of cancer in women. Approximately 2-3% of all women over age 40 years will develop some form of cervical cancer.

Background: Magnolia Medical Center

- ***Greenwood, MS***
 - ***Service Area-Leflore, Humphrey Holmes, Attala, Carroll, Montgomery, Grenada***
 - ***Size of HIV population served***
 - ***255 total patients***
 - ***151 Males, 105 females***
 - ***246 African American, 8 Whites, and 1 Unknown***
 - ***About 45% of clients are equal to or below federal poverty level.***
-

2009 Data

Demographics



Total Females	118
Black	114
White	3
Unknown	1

Age Range	Total
19-24 years	12
25-44 year	64
45-64 years	41
65 years & older	1

Cervical Cancer Screening QI Project

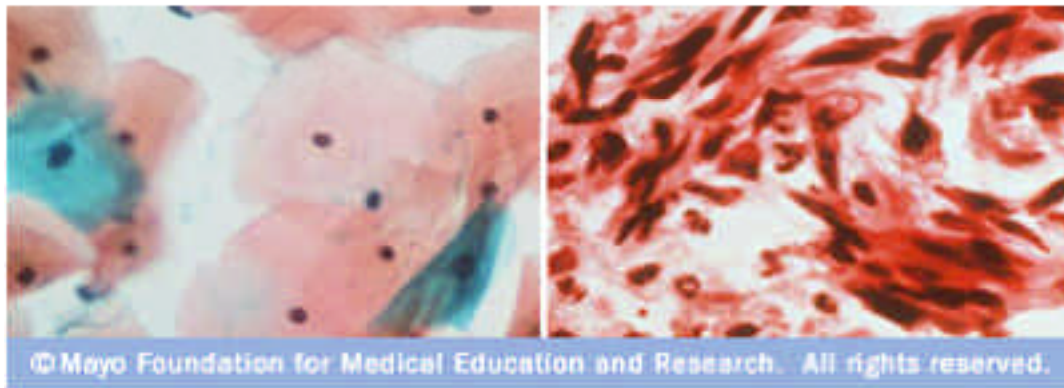
■ Rationale



- *Cervical cancer is the third most common type of cancer in women. Approximately 2-3% of all women over age 40 years will develop some form of cervical cancer.***
- *HIV Positive Women are 2 to 3 times higher than expected number of cases and MMC had a relatively low percentage of women with annual Cervical Cancer Screenings (CCS).***

Rationale contd

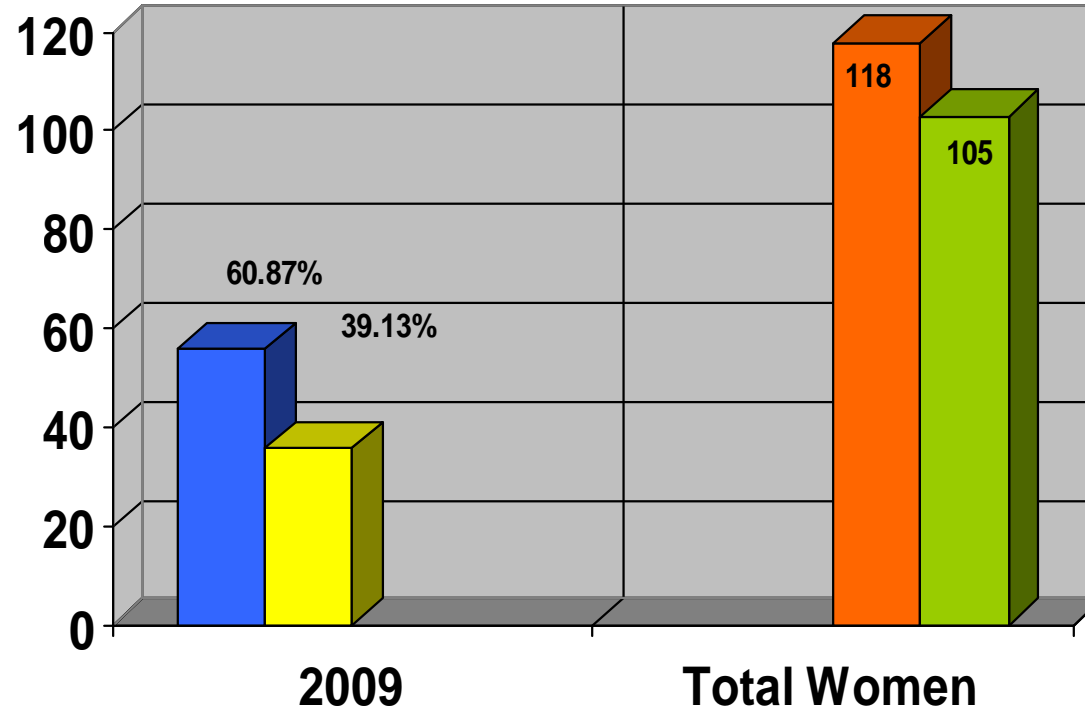
- ***HIV Positive women with invasive cervical cancer present at more advanced stages and with cancer metastasizing to unusual locations.***



The slide on the left shows normal cervical cells magnified by a microscope. Normal cells are uniform in size and shape. By comparison, the slide on the right shows irregular, disfigured cervical cells — typical of cervical cancer.

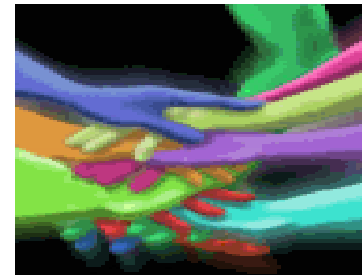
MMC Baseline Data: 2009

■ CCS Complete ■ CCS Incomplete ■ 2009 ■ 2010



Team Members

- *Kawanis Collins, Program Coordinator*
- *Henry Flautt, Jr, MD, Medical Director*
- *Sylvia Crutchfield, CFNP*
- *Kizmet Cleveland, Case Manager*
- *Treva Adams-Stigler, RN, CQI Coordinator*
- *Senoria Taylor, Data Entry Clerk*
- *Marshell McDowell, Nurse Case Manager*



HRSA/HAB Performance Measure: Cervical Cancer Screening

Numerator:

Number of HIV-Infected female clients who had Pap screen results documented in the measurement year/

Denominator:

Number of HIV-infected female clients, 18 years or older, who had a medical visit with a provider with prescribing privileges at least once in the measurement year.

Improvement Goal

- *Increase Cervical Cancer Screening rates from 60.87% to 85% by the end of 2010.*



Quality Improvement Project

- ***Key underlying causes for clients not getting Cervical Cancer Screens (CCS)***
 - ***Patients refusing***
 - ***Follow up calls were not being made***
 - ***Clients not showing up for appointment***
 - ***Charts were not being flagged to alert provider that a pap was needed.***
-

Interventions Tested: April – June, 2010

- ***Print encounter reports prior to patient visit. Flag the encounter report to alert the provider that a screen is needed.***
 - ***If CC screen can not be completed the day of visit, schedule appointment to return within 30 days.***
 - ***Get results from private OB-GYN providers.***
-

Data exclusions

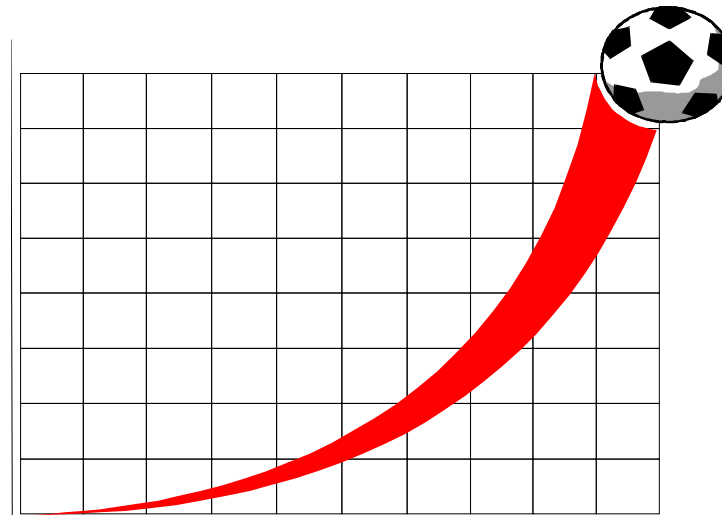
- ***Calculate the number of female clients who do not meet HRSA/HAB guidelines***
 - ***Identify deceased clients who had only one medical visit and remove from denominator.***
-

Results

- ***9 additional cervical cancer screenings were completed***
 - ***2 clients deceased and were deducted from the denominator as an exclusion***
-

Outcome: Goal Achieved

*Percentage Increased from
71% to 84.86%*



*Way To
Go!!!*



Women not receiving CCS

Actionable reasons for follow up

- ***3 clients lost to care (examine process of updating contact information)***
 - ***3 no shows***
 - ***2 waiting on results from private OB-GYN***
-

Next Steps

■ *Next PDSAs*

- ❑ *Coordinate remaining female patients with District Social Workers*
 - ❑ *Add health education component*
 - ❑ *Examine clinic's frequency of updating contact information*
 - ❑ *Follow up on OB-Gyn results done at private OB providers*
-

To Sustain Improvements

- ***Encounter Reports are printed daily***
 - ***Reports are flagged that need CCS.***
 - ***Follow-up appointments are made within 30 days.***
 - ***Results are received from private OB-Gyn***
 - ***Case Manager calls client to remind her of appointment.***
 - ***District Social Workers do home visits.***
-

Contact Information

- For further information, contact

Kawanis L. Collins, BSW

Program Coordinator, RW Part C Program

Magnolia Medical Center

1413 Strong Avenue

Greenwood, MS 38930

Office: 662-451-7384

Fax: 662-459-1203

kcollins@glh.org
